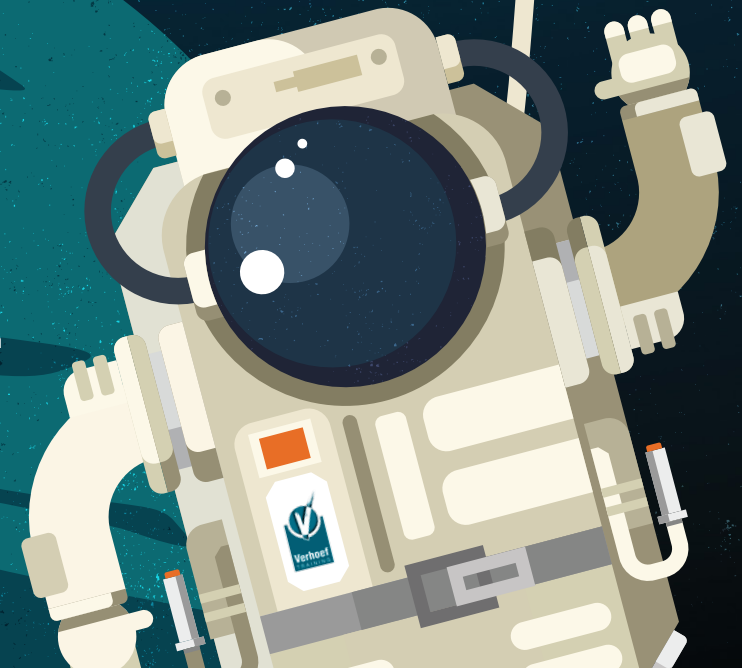
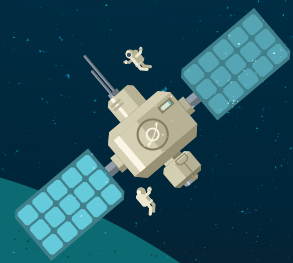




ABOVE & BEYOND THE VERHOEF COURSE SCHEDULE 2018



CONTACT US

Verhoef Training
11 Kingsmead Square
Bath, BA1 2AB
United Kingdom
T. +44 (0)1225 339705
F. +44 (0)1225 339671
E. info@verhoef-training.co.uk
www.verhoef-training.co.uk



TO REFOLD...

First fold in half along central crease, then push ends together.

This is printed on paper that is sourced from well managed and sustainable forests. Please pass this on or recycle it.

- 01 IBM System z & IBM i
- 02 IBM WAS, MQ, IIB, DB2, Fujitsu & EPI
- 03 PM, Agile, A&D, Audit & Security & Testing
- 04 Web, Mobile, Java Dev & Crystal Reports
- 05 Databases, Virtualisation & DevOps
- 06 CompTIA, UNIX, Linux, Windows & Networking

Design surface28



IBM System z & IBM i

IBM System z (Mainframe)

| | Code | Days | Price | JAN | FEB | MAR | APR | MAY | JUN | JUL | AUG | SEP | OCT | NOV | DEC |
|--|-------|------|--------|-----|-----|-----|-----|-----|-----|-----|-----|-----|-----|-----|-----|
| z/OS Foundation Fast Track (ZOSI, TSO & JCL) | ZOSTI | 5 | £1,750 | | 5 | | 9 | | 11 | | 6 | | 1 | | 3 |
| z/OS for Beginners | ZOSI | 2 | £800 | 2 | | 19 | | 14 | | 2 | | 3 | 29 | | |
| TSO/ISPF Workshop | TSO | 2 | £800 | 4 | | 21 | | 16 | | 4 | | 5 | | 5 | |
| z/OS Job Control Language | JCL | 3 | £1,350 | 8 | | | 16 | 23 | | 9 | | 10 | | 7 | |
| VSAM Fundamentals | VSF | 3 | £1,350 | 29 | | | 23 | | | | 13 | | 8 | | |
| VSAM Tuning & Performance | VS | 2 | £850 | | 1 | | 26 | | | | 16 | | 11 | | |
| ISPF Dialog Management | ISPD | 5 | £1,750 | 8 | | | 23 | | | | | 3 | | | 3 |
| z/OS Basic Operations | ZOP1 | 3 | £1,350 | | 5 | | | 2 | | | | 10 | | 5 | |
| JES2 for Operators | JES2 | 3 | £1,350 | 15 | | | 23 | | | 16 | | | | 12 | |
| ICF Catalog Management Workshop | MICW | 3 | £1,350 | 22 | | | | 9 | | | 6 | | | 19 | |
| z/OS Systems Programming Introduction | SPI | 4 | £1,500 | | 5 | | | 1 | | | | 3 | | 26 | |
| z/OS System Services | ZOSS | 4 | £1,500 | | | 5 | | 8 | | | | 10 | | | 3 |
| Effective z/OS Problem Analysis Techniques | ZPAT | 3 | £1,350 | 15 | | 12 | | | 18 | | | | 22 | | |
| RACF Administration | RACF | 5 | £1,750 | 8 | | | 23 | | | 16 | | 17 | | 19 | |
| Parallel Sysplex Fundamentals | PSF1 | 3 | £1,350 | | | 5 | | | 11 | | | | 8 | | |
| Workload Manager | WLM | 3 | £1,350 | | | 12 | | | | | | | 15 | | |
| SMP/E | SMPE | 4 | £1,500 | 22 | | | 23 | | | | 20 | | | 12 | |
| UNIX Implementation & Use on z/OS | UNZOS | 3 | £1,350 | | 12 | | | | 25 | | | 10 | | 19 | |

IBM System z Storage Management

| | Code | Days | Price | JAN | FEB | MAR | APR | MAY | JUN | JUL | AUG | SEP | OCT | NOV | DEC |
|-----------------------------------|------|------|--------|-----|-----|-----|-----|-----|-----|-----|-----|-----|-----|-----|-----|
| Storage Management Fundamentals | SMSF | 4 | £1,500 | 15 | | 19 | | | | | 13 | | | 19 | |
| SMS Implementation & Control | SMIC | 3 | £1,350 | 22 | | | 9 | | | | 22 | | | | 10 |
| HSM Implementation & Control | HSM | 3 | £1,350 | 29 | | | 16 | | | | | 3 | | | 3 |
| DFSMSrmm Implementation & Control | RMM | 3 | £1,350 | | 12 | | | | 4 | | | | 22 | | |

CICS Transaction Server

| | Code | Days | Price | JAN | FEB | MAR | APR | MAY | JUN | JUL | AUG | SEP | OCT | NOV | DEC |
|------------------------------|------|------|--------|-----|-----|-----|-----|-----|-----|-----|-----|-----|-----|-----|-----|
| CICS Concepts & Facilities | CAF | 2 | £850 | | 5 | | | 9 | | | | 3 | | 26 | |
| CICS Application Programming | CAP | 4 | £1,950 | | | | 9 | | | | 13 | | 8 | | |
| CICS for Systems Programmers | CSP | 4 | £1,950 | | 12 | | | 14 | | | | 3 | | 26 | |
| CICS Transaction Debugging | CTD | 3 | £1,500 | | 5 | | | 1 | | | | 3 | | 26 | |
| CICS Web Enablement | CWE | 4 | £1,995 | 22 | | | 23 | | | | 21 | | | 19 | |

IBM System z Programming

| | Code | Days | Price | JAN | FEB | MAR | APR | MAY | JUN | JUL | AUG | SEP | OCT | NOV | DEC |
|--------------------------------|--------|------|--------|-----|-----|-----|-----|-----|-----|-----|-----|-----|-----|-----|-----|
| Assembler Programming | A1 | 5 | £1,995 | | 12 | | 9 | | 11 | | 6 | | 1 | | 3 |
| COBOL Part 1 | COBOL1 | 5 | £1,995 | | 12 | | 9 | | 11 | | 6 | | 1 | | 3 |
| COBOL Part 2 | COBOL2 | 5 | £1,995 | | 19 | | 16 | | 18 | | 13 | | 8 | | 10 |
| Writing REXX Programs for z/OS | REXX | 3 | £1,450 | | | 5 | | | 25 | | 20 | | 15 | | 10 |

IBM System i

| | Code | Days | Price | JAN | FEB | MAR | APR | MAY | JUN | JUL | AUG | SEP | OCT | NOV | DEC |
|----------------------------|-------|------|--------|-----|-----|-----|-----|-----|-----|-----|-----|-----|-----|-----|-----|
| Operations | ISO | 4 | £1,395 | 23 | 26 | 26 | | 21 | 25 | | | 3 | | 5 | |
| System Management & Admin | ISADM | 4 | £1,420 | | 13 | | | 29 | | | | 4 | | 5 | |
| RPG IV Programming | ISR4P | 4 | £1,495 | | 5 | | 30 | | 18 | | | | 1 | | |
| Advanced RPGIV Programming | ISR4A | 4 | £1,495 | | | 5 | | 14 | | | 6 | | 8 | | |
| System Facilities | ISSQL | 4 | £1,395 | 9 | | 20 | 24 | | 5 | | | 10 | | 5 | |



IBM WAS, MQ, IIB, DB2, Fujitsu & EPI

IBM WebSphere Application Server & RAD

| | Code | Days | Price | JAN | FEB | MAR | APR | MAY | JUN | JUL | AUG | SEP | OCT | NOV | DEC |
|--|--------|------|--------|-----|-----|-----|-----|-----|-----|-----|-----|-----|-----|-----|-----|
| WebSphere Application Server Introduction | WI | 1 | £500 | 22 | | 12 | | 21 | 25 | | | 3 | | 5 | |
| WebSphere Application Server v8.5.5 Administration | WA855G | 5 | £2,495 | 22 | | 12 | | 21 | 25 | | | 3 | | 5 | |
| WebSphere Application Server v8.5.5 Performance Tuning | WA815G | 4 | £1,800 | | | 19 | | | | | 28 | | 1 | | 3 |
| Java Programming with IBM RAD | JRAD | 5 | £1,650 | | 19 | | | 14 | | | | 10 | | 19 | |

IBM MQ & IBM Integration Bus (IIB)

| | Code | Days | Price | JAN | FEB | MAR | APR | MAY | JUN | JUL | AUG | SEP | OCT | NOV | DEC |
|--|--------|------|--------|-----|-----|-----|-----|-----|-----|-----|-----|-----|-----|-----|-----|
| IBM MQ Introduction | MQI | 1 | £500 | 8 | 12 | 12 | 9 | 14 | 4 | | 13 | 24 | 1 | 19 | |
| IBM MQ Application Development (all platforms) | MQP | 3 | £1,350 | | 6 | | 16 | | 12 | | | 25 | | 12 | |
| IBM MQ Admin LUW Part 1 | MQANT | 4 | £1,500 | 8 | | 12 | | 14 | | | 13 | | 1 | | 3 |
| IBM MQ Admin z/OS Part 1 | MQAZ | 4 | £1,500 | | 12 | | 9 | | 4 | | | 24 | | 19 | |
| IBM MQ Admin (all platforms) Part 2 | MQAA | 3 | £1,350 | 15 | | 19 | | | 11 | | | | 8 | | 10 |
| IIB Introduction | IIBI | 1 | £500 | 22 | | 5 | | 8 | | 9 | | 17 | | 12 | |
| IIB Administration | WM646G | 4 | £2,250 | 23 | | 6 | | 8 | | 10 | | 18 | | 13 | |
| IIB Application Development | WM666G | 5 | £2,500 | 29 | | | 16 | | 18 | | | | 8 | | |

IBM DB2

| | Code | Days | Price | JAN | FEB | MAR | APR | MAY | JUN | JUL | AUG | SEP | OCT | NOV | DEC |
|---------------------------------------|---------|------|--------|-----|-----|-----|-----|-----|-----|-----|-----|-----|-----|-----|-----|
| DB2 Overview | DB2I | 1 | £500 | 8 | | 5 | | 14 | | | | 3 | | 5 | |
| DB2 SQL Application Programming | DB2SQL | 4 | £1,700 | 22 | | 5 | | 21 | | | 6 | | 15 | | 3 |
| Using XML with DB2 | DB2X | 2 | £700 | | | | 9 | | 4 | 30 | | | | | 13 |
| DB2 for z/OS Administration | DB2A | 5 | £1,700 | 8 | | 12 | | 14 | | | | 3 | | 5 | |
| DB2 for z/OS SQL Performance & Tuning | DB2PSQ | 3 | £1,250 | | | | 4 | | 18 | | | 3 | | | 10 |
| DB2 for z/OS Operations & Utilities | DB2OU | 2 | £700 | | 1 | | | | 21 | | | 6 | | | 13 |
| DB2 12 Transition & Update | DB2M12 | 1 | £500 | | 1 | | 3 | | 7 | | | 6 | | 21 | |
| DB2 for LUW Administration | DB2UDBA | 4 | £1,500 | | 5 | | | 14 | | | | 3 | | 5 | |
| DB2 for LUW SQL Performance & Tuning | DB2UPSQ | 3 | £1,300 | | | | 4 | | 18 | | | 24 | | | 3 |

Fujitsu VME superNOVA

| | Code | Days | Price | JAN | FEB | MAR | APR | MAY | JUN | JUL | AUG | SEP | OCT | NOV | DEC |
|---------------------------------------|--------|------|--------|-----|-----|-----|-----|-----|-----|-----|-----|-----|-----|-----|-----|
| VME superNOVA Groundworks | VFDN | 2 | £995 | 8 | | | 17 | | 4 | | | 3 | | | 3 |
| VME superNOVA Operations | VME NO | 5 | £2,500 | | 19 | | | | 25 | | | | 1 | | |
| VME System Management & Tech. Support | NOVVM | 5 | £2,500 | | 5 | | | 21 | | 30 | | | 8 | 19 | |
| COBOL For VME superNOVA | COBSV | 15 | £7,500 | | | 5 | | | | 16 | | 10 | | 26 | |
| VME COBOL Conversion | VMEC | 5 | £2,500 | | 12 | | | | 25 | | | | 15 | | |
| SCL Programming | VSCLPF | 5 | £2,500 | | 5 | | 23 | | | 9 | | | | 5 | |
| IDMSX for VME | IDMSV | 5 | £2,500 | 15 | | 12 | | 14 | | 2 | | | 22 | | |
| VME superNOVA TPMS | VMET | 3 | £1,500 | 22 | | | 9 | | 11 | | | 24 | | | 3 |
| Application Master OnLine | VMEAM | 4 | £2,000 | 15 | | | 16 | | | 9 | | | | 5 | |
| VME Data Dictionary | VMEDD | 3 | £1,500 | | 5 | | 23 | | | | | 17 | | | 10 |
| VME superNOVA Communications | VMENC | 5 | £2,500 | | | 12 | | | | 23 | | | 22 | | |

EPI Certified Data Centre

| | Code | Days | Price | JAN | FEB | MAR | APR | MAY | JUN | JUL | AUG | SEP | OCT | NOV | DEC |
|--|-------|------|--------|-----|-----|-----|-----|-----|-----|-----|-----|-----|-----|-----|-----|
| CDCP - Certified Data Centre Professional | CDCP | 2 | £1,100 | 29 | | | 23 | | | 30 | | | | 5 | |
| CDCS - Certified Data Centre Specialist | CDCS | 3 | £1,650 | 31 | | | | | | | 1 | | | | |
| CDFOM - Certified Data Centre Fac. Ops Manager | CDFOM | 3 | £1,650 | | | | 25 | | | 18 | | | | 7 | |

PM, Agile, A&D, Audit & Security & Testing

Project & Service Management

| | Code | Days | Price | JAN | FEB | MAR | APR | MAY | JUN | JUL | AUG | SEP | OCT | NOV | DEC |
|---|------|------|--------|-----|-----|-----|-----|-----|-----|-----|-----|-----|-----|-----|-----|
| Managing Projects using MS Project Server | MSPR | 3 | £1,195 | 17 | | 21 | | 16 | | 18 | | 19 | | 5 | |
| Project Management Foundation | PMF | 3 | £800 | | 12 | | | 14 | | | 13 | | | 12 | |
| PRINCE2® 2017 Foundation Certificate | P2F | 3 | £795 | 8 | 12 | 5 | 16 | 21 | 18 | 23 | 20 | 24 | 22 | 19 | 10 |
| PRINCE2® 2017 Foundation & Practitioner | P2P | 5 | £995 | 8 | 12 | 5 | 16 | 21 | 18 | 23 | 20 | 24 | 22 | 19 | 10 |
| PRINCE2® 2017 Practitioner Workshop/Re-registration | P2W | 2 | £650 | 11 | 15 | 8 | 19 | 24 | 21 | 26 | 23 | 27 | 25 | 22 | 13 |
| PRINCE2® Agile Practitioner | P2A | 3 | £950 | | 12 | | | | 4 | | 13 | | | 12 | |
| PRINCE2® 2017 Foundation & PRINCE2 Agile Practitioner | P2AF | 5 | £1,295 | 8 | 12 | 5 | 16 | 21 | 18 | 23 | 20 | 24 | 22 | 19 | 10 |
| MSP® Foundation | MSPF | 3 | £1,200 | 15 | | 12 | | 9 | | 9 | | 17 | 8 | 12 | 17 |
| MSP® Foundation & Practitioner | MSP | 5 | £1,995 | 15 | | 12 | | 14 | | 9 | | 17 | 8 | 12 | 17 |
| MSP® Practitioner Workshop | MSPW | 2 | £800 | 18 | | 15 | | 10 | | 12 | | 20 | 11 | 15 | 20 |

Agile

| | Code | Days | Price | JAN | FEB | MAR | APR | MAY | JUN | JUL | AUG | SEP | OCT | NOV | DEC |
|---|------|------|--------|-----|-----|-----|-----|-----|-----|-----|-----|-----|-----|-----|-----|
| Agile Project Management | AGPM | 3 | £1,300 | | 12 | | 16 | | 11 | | 13 | | 8 | 26 | |
| Business Analysis in an Agile Environment | AGBA | 3 | £1,300 | 3 | | 5 | | | | 2 | | | | 5 | |
| Agile Business Analysis for Practitioners | AGAP | 5 | £1,750 | 8 | | 5 | | | | 2 | | | | 5 | |
| Foundation Certificate in Agile Practice | AGF | 3 | £1,300 | | 19 | | | 2 | | | | 3 | | | 10 |

Analysis & Design

| | Code | Days | Price | JAN | FEB | MAR | APR | MAY | JUN | JUL | AUG | SEP | OCT | NOV | DEC |
|---|-------|------|--------|-----|-----|-----|-----|-----|-----|-----|-----|-----|-----|-----|-----|
| Business Systems Analysis | BSA | 5 | £1,750 | | 5 | | | 14 | | 9 | | 10 | | 5 | |
| Business Analysis Foundation | BAF | 3 | £1,300 | 22 | | | 10 | | | 11 | | 3 | | 5 | |
| Business Analysis Practice | BAP | 3 | £1,300 | | 12 | | | 14 | | 11 | | 17 | | 12 | |
| Requirements Engineering | RQENG | 3 | £1,300 | | 12 | | 18 | | 13 | | 15 | | 10 | | 3 |
| Data Modelling & Database Design | DMDD | 3 | £1,300 | 8 | | 5 | | 2 | | 23 | | | 1 | 26 | |
| Data Warehouse Design | DTWAD | 3 | £1,300 | 15 | | 12 | | 23 | | 30 | | | | 19 | |
| Business Process Modelling with BPMN | BPM | 3 | £1,300 | 8 | | 5 | | 2 | | 23 | | | 1 | 26 | |
| OO Analysis & Design with UML | ADUML | 5 | £1,750 | 29 | | | | | 4 | | 6 | | 8 | | |
| Programming Best Practice & Design Patterns | BPDP | 4 | £1,500 | 8 | | 19 | | 8 | | 16 | | 17 | | 12 | |

Audit & Security

| | Code | Days | Price | JAN | FEB | MAR | APR | MAY | JUN | JUL | AUG | SEP | OCT | NOV | DEC |
|--------------------------------------|-------|------|--------|-----|-----|-----|-----|-----|-----|-----|-----|-----|-----|-----|-----|
| Introduction to Firewalls | IFW | 3 | £1,300 | | 5 | | 9 | 21 | | 30 | | | | | |
| Networking Audit & Security | ASONS | 3 | £1,300 | | 12 | | 17 | | 4 | | | 3 | 22 | | 10 |
| UNIX & Linux Audit & Security | USEC | 3 | £1,300 | 15 | | 19 | | 14 | | 16 | | 17 | | 12 | |
| DB2 Audit & Security | DB2AS | 2 | £850 | | 19 | | 23 | | | 18 | | 19 | | 15 | |
| Oracle Audit & Security | OAS | 2 | £850 | 8 | | 12 | | 8 | | | 20 | | 3 | | 3 |
| SQL Server Audit & Security | MSSAS | 2 | £850 | | | | 3 | | 14 | | 13 | | | 5 | |
| Auditing Windows & Active Directory | SWSF | 2 | £850 | | | 1 | | | 28 | | | 17 | | | 10 |
| Auditing Virtualised Infrastructures | VPFA | 2 | £850 | | | 1 | | | 7 | | | 20 | | | |
| Auditing in the Cloud | AITC | 2 | £850 | | | | 5 | | | | 16 | | | 5 | |

Software Testing

| | Code | Days | Price | JAN | FEB | MAR | APR | MAY | JUN | JUL | AUG | SEP | OCT | NOV | DEC |
|---|------|------|--------|-----|-----|-----|-----|-----|-----|-----|-----|-----|-----|-----|-----|
| Test Design Techniques | SST | 4 | £1,500 | 29 | | 19 | | 8 | | 16 | | 17 | | 12 | |
| Testing in an Agile Environment | AST | 3 | £1,300 | | 5 | | 9 | | | 30 | | | | 5 | |
| Software Testing Foundation | STF | 3 | £1,300 | | 5 | 7 | | 14 | | 11 | | 12 | | | 5 |
| Mastering Web Testing (inc. Performance & Security) | MWT | 5 | £1,750 | 22 | | | 9 | | 4 | 30 | | | 1 | 19 | |
| Software Test Management | STM | 3 | £1,300 | | 5 | 7 | | 14 | | 11 | | 12 | | | 5 |

04 Web, Mobile, Java Dev & Crystal Reports

Web Development

| | Code | Days | Price | JAN | FEB | MAR | APR | MAY | JUN | JUL | AUG | SEP | OCT | NOV | DEC |
|--|-------|------|-------------|-----|-----|-----|-----|-----|-----|-----|-----|-----|-----|-----|-----|
| HTML5 / HTML & CSS3 | HTML5 | 2/4 | £600/£1,500 | | | | 3 | | 4 | | | | 1 | | 3 |
| JavaScript Introduction / Developers Programme | JS | 2/5 | £700/£1,750 | | 5 | | 9 | | 11 | | 6 | | 8 | | 3 |
| JavaScript Libraries | JSLIB | 4 | £1,500 | | 12 | | 16 | | 18 | | 13 | | 15 | | 10 |
| jQuery | JQU | 2 | £700 | | | 5 | | 2 | | | | 10 | | 5 | |
| XML Introduction | XML | 2 | £700 | | 12 | | | 9 | | | | | 15 | | 3 |
| Node.JS Introduction | NOJS | 3 | £1,300 | 15 | | | 4 | | 18 | | | 10 | | 6 | |
| Angular Development | ANG4 | 5 | £1,995 | | | | | | 11 | | | 17 | | 5 | |
| MEAN Stack For Web Developers | MEAN | 5 | £1,995 | | 26 | | 23 | | 25 | | | 24 | | 26 | |

Java, C++, Perl & Python

| | Code | Days | Price | JAN | FEB | MAR | APR | MAY | JUN | JUL | AUG | SEP | OCT | NOV | DEC |
|--|--------|------|--------|-----|-----|-----|-----|-----|-----|-----|-----|-----|-----|-----|-----|
| Java Programming | JAVOOP | 5 | £1,750 | 8 | 19 | | | 14 | | 2 | | 3 | | 12 | |
| Advanced Java | ADVJ | 5 | £1,750 | 15 | | 5 | | | 4 | | 13 | | 8 | | 3 |
| Building Java EE Applications | JEE1 | 5 | £1,750 | 29 | | | | 14 | | 9 | | 3 | | 19 | |
| Building Java EE Web Applications | JEEW | 3 | £1,300 | | 5 | | 9 | | 11 | | 22 | | 1 | | 10 |
| Enterprise Java Apps with Spring & Hibernate | JSH | 4 | £1,500 | | | 5 | | 14 | | 30 | | | 15 | | |
| EJB Programming Using Jboss / Eclipse / WebLogic | EJB | 5 | £1,750 | 22 | | | 23 | | | 23 | | 17 | | 26 | |
| JBoss Admin & Clustering - EAP 7 & WILDFLY 10 | JBSA | 5 | £1,750 | 8 | | 5 | | | 4 | | 13 | | 8 | | 3 |
| Oracle Glassfish Server Administration | OGSA | 5 | £1,750 | 15 | | | | 14 | | 9 | | 3 | | 19 | |
| C Language Programming | CPROG | 4 | £1,500 | | 26 | | | | 25 | | | | 1 | | 3 |
| C++ OO Programming | CPLUS | 5 | £1,750 | | 5 | | | 14 | | | | 24 | | | 3 |
| Introduction to C++ 2011 New Features | CPL11 | 2 | £795 | 18 | | | 9 | | | 18 | | 17 | | | 17 |
| Perl Programming | PE | 3 | £1,300 | 15 | | | 4 | | 18 | | | 10 | | 6 | |
| Python Programming | PYTH | 3 | £1,300 | | | 5 | | | 25 | | | | 22 | 5 | |

Microsoft Visual Studio & .NET

| | Code | Days | Price | JAN | FEB | MAR | APR | MAY | JUN | JUL | AUG | SEP | OCT | NOV | DEC |
|-------------------------------|------|------|---------------|-----|-----|-----|-----|-----|-----|-----|-----|-----|-----|-----|-----|
| C# Programming | CSHP | 5 | £1,750 | | | | 9 | | 11 | | 6 | | 8 | | 3 |
| Visual Basic Programming | VBPN | 5 | £1,750 | 22 | | 12 | | 14 | | 9 | | 3 | | 19 | |
| SharePoint for Developers | FSHP | 5 | £1,750 | | | 5 | | | 25 | | | 10 | | 5 | |
| ASP.NET (C# or VB) | ASP | 5 | £1,750 | | 5 | | 23 | | 18 | | | 3 | | 5 | |
| ASP.NET MVC Programming | MVC | 4 | £1,500 | | | 19 | | 21 | | | | 17 | | 19 | |
| ADO.NET & LINQ | ADON | 4 | £1,500 | | 12 | | 23 | | 11 | | 13 | | 15 | | |
| BizTalk Server for Developers | MBTS | 5 | £1,750 | 15 | | 12 | | 21 | | 16 | | | | 5 | |
| Programming Azure | PAZE | 3/5 | £1,300/£1,750 | | 12 | | | 21 | | 30 | | | 15 | 26 | |

Mobile Development

| | Code | Days | Price | JAN | FEB | MAR | APR | MAY | JUN | JUL | AUG | SEP | OCT | NOV | DEC |
|------------------------------|------|------|--------|-----|-----|-----|-----|-----|-----|-----|-----|-----|-----|-----|-----|
| Android Development | ADJP | 4 | £1,500 | | | | 9 | | | | | 17 | | 5 | |
| iOS Development with Swift 3 | PHON | 5 | £1,750 | | 12 | | | | | 30 | | | | 26 | |

SAP Crystal Reports

| | Code | Days | Price | JAN | FEB | MAR | APR | MAY | JUN | JUL | AUG | SEP | OCT | NOV | DEC |
|------------------------------|------|------|-------|-----|-----|-----|-----|-----|-----|-----|-----|-----|-----|-----|-----|
| Crystal Reports Basic Skills | CRB | 2 | £750 | 15 | | 12 | | 8 | | 16 | | 10 | | 12 | |
| Crystal Reports Advanced | CRA | 2 | £750 | 17 | | 14 | | 10 | | 18 | | 12 | | 14 | |

Microsoft SQL Server

| | Code | Days | Price | JAN | FEB | MAR | APR | MAY | JUN | JUL | AUG | SEP | OCT | NOV | DEC |
|--|-------|------|--------|-----|-----|-----|-----|-----|-----|-----|-----|-----|-----|-----|-----|
| SQL Server Introduction to Querying | MSSIQ | 2 | £795 | 8 | | 5 | | 14 | | | | 10 | | 12 | |
| SQL Server Programming | MSSP | 5 | £1,700 | 8 | | 5 | | 14 | | | | 10 | | 12 | |
| SQL Server Administration | MSSA | 5 | £1,700 | | | | 9 | | 25 | | | 17 | | 19 | |
| SQL Server Business Intelligence | MSSBI | 5 | £1,700 | | 5 | | 16 | | | 2 | | 24 | | | 3 |
| SQL Server Reporting Services | MSSRS | 3 | £1,350 | | 5 | | 16 | | 11 | | 6 | | 15 | | |
| SQL Server High Availability Solutions | MSSHA | 3 | £1,350 | | | 12 | | | | 16 | | | 22 | | |
| Power BI | ADPBI | 2 | £795 | 22 | | | 5 | | | 16 | | | | 12 | |

Oracle

| | Code | Days | Price | JAN | FEB | MAR | APR | MAY | JUN | JUL | AUG | SEP | OCT | NOV | DEC |
|---|--------|------|--------|-----|-----|-----|-----|-----|-----|-----|-----|-----|-----|-----|-----|
| Oracle SQL & PL/SQL Fast Track | ORFT | 5 | £1,750 | | 12 | | 16 | | 4 | | 6 | | 8 | | 3 |
| Oracle SQL | ORSOL | 3 | £1,300 | | 6 | | | 14 | | 2 | | 3 | | 5 | |
| Oracle SQL Tuning | ORSOLT | 1 | £400 | | 9 | | | 17 | | 5 | | 6 | | 8 | |
| Oracle SQL Extended | ORSOLE | 1 | £400 | | 9 | | | 17 | | 5 | | 6 | | 8 | |
| Oracle SQL Analytics | ORSOLA | 1 | £400 | | 9 | | | 17 | | 5 | | 6 | | 8 | |
| Oracle PL/SQL | ORPL1 | 3 | £1,300 | 8 | | 12 | | 21 | | 9 | | 10 | | 12 | |
| Oracle Database Administration | ORDBA | 5 | £1,750 | 22 | | 12 | | | 4 | | 20 | | 1 | | 3 |
| Oracle Database Recovery Manager Workshop | ORRDG | 2 | £795 | | | 19 | | | 11 | | 6 | | 8 | | 10 |

MySQL

| | Code | Days | Price | JAN | FEB | MAR | APR | MAY | JUN | JUL | AUG | SEP | OCT | NOV | DEC |
|--------------------------------|-------|------|--------|-----|-----|-----|-----|-----|-----|-----|-----|-----|-----|-----|-----|
| MySQL Introduction to Querying | MYSQI | 3 | £1,300 | | | | 17 | | 25 | | 28 | | 29 | | |
| MySQL Database Administration | MYSQA | 5 | £1,750 | 22 | | | 9 | | | 9 | | 3 | | 5 | |
| PHP & MySQL Web Development | PHP | 4 | £1,500 | | 5 | | 23 | | 4 | | | 17 | | 19 | |

Big Data & NoSQL

| | Code | Days | Price | JAN | FEB | MAR | APR | MAY | JUN | JUL | AUG | SEP | OCT | NOV | DEC |
|------------------------------------|-------|------|--------|-----|-----|-----|-----|-----|-----|-----|-----|-----|-----|-----|-----|
| Introduction to Hadoop & Big Data | HADO | 3 | £1,300 | 15 | | | 23 | | | 23 | | | 22 | | 17 |
| NoSQL Introduction | INOS | 2 | £750 | | | 5 | | 9 | | | | 10 | | 5 | |
| NoSQL Administration using MongoDB | NOSA | 3 | £1,300 | | | 7 | | 9 | | | | 12 | | 7 | |
| NoSQL Programming using MongoDB | NOSP | 3 | £1,300 | 8 | | | 17 | | | 16 | | | 15 | | 10 |
| Apache Cassandra - Level 1 | CASS1 | 3 | £1,350 | | | | | 8 | | | | 3 | | | 3 |
| Apache Cassandra for Operators | CASSO | 2 | £995 | | 1 | | | 10 | | | | 6 | | | 6 |

Virtualisation, Cloud & DevOps

| | Code | Days | Price | JAN | FEB | MAR | APR | MAY | JUN | JUL | AUG | SEP | OCT | NOV | DEC |
|---|-------|------|--------|-----|-----|-----|-----|-----|-----|-----|-----|-----|-----|-----|-----|
| Introduction to Cloud Computing | ICC | 1 | £500 | 15 | | 12 | | 8 | | 16 | | 10 | | 12 | |
| VMware vSphere 6 Installation & Configuration | VMV5S | 4 | £1,600 | 29 | | | 16 | | 5 | | | 11 | | 27 | |
| Managing Windows Hyper-V | HYP | 4 | £1,600 | 9 | | 12 | | 8 | | | 13 | | 22 | | |
| Microsoft Azure Operations | AZURE | 4 | £1,600 | | | 5 | | 29 | | | | 24 | 22 | 19 | |
| Amazon Web Services (AWS) | AMWS | 4 | £1,600 | | 20 | | 16 | | 19 | | 20 | | 2 | | 3 |
| OpenStack Fundamentals | OSOF | 1 | £500 | 22 | | | | 29 | | 9 | | | | 5 | |
| OpenStack Operations | OSOP | 3 | £1,300 | 22 | | | | 30 | | 9 | | | | 5 | |
| Swift Fundamentals | SWIF | 3 | £1,300 | 24 | | | 4 | | | 18 | | | | 14 | |
| Docker Fundamentals | DOCF | 2 | £795 | 22 | | | 5 | | | 16 | | | | 12 | |
| Puppet Administration & Configuration | PUPCA | 5 | £1,750 | 22 | | 12 | | | | | | 24 | | 26 | |
| Salt Stack Essentials | SSTE | 2 | £1,100 | | 8 | | | 17 | | | | 6 | | 8 | |

06 CompTIA, UNIX, Linux, Windows & Networking

CompTIA & LPI Certified Courses (Inc. Exam Vouchers)

| | Code | Days | Price | JAN | FEB | MAR | APR | MAY | JUN | JUL | AUG | SEP | OCT | NOV | DEC |
|--|-------|------|--------|-----|-----|-----|-----|-----|-----|-----|-----|-----|-----|-----|-----|
| LPI Linux Essentials | LPIE | 3 | £1,100 | 3 | 5 | 5 | 9 | 2 | 4 | 30 | | 3 | 8 | 5 | 3 |
| Linux+ / LPIC-1 Bootcamp | LPBC | 5 | £1,750 | 8 | | 19 | | 14 | | 16 | | 17 | | 19 | |
| IT Fundamentals | ITFUN | 2 | £495 | | 8 | | | | 7 | | | | 11 | | |
| A+ Essentials & Practical Application Combined | AEPP | 5 | £1,650 | 8 | | 5 | | 21 | | 16 | | 24 | | 26 | |
| Network+ | NETP | 5 | £1,650 | | 26 | | | | 4 | | | 17 | | | 10 |
| Server+ | SERP | 5 | £1,650 | | | 5 | | 14 | | | | 10 | | 12 | |
| Security+ | SECP | 5 | £1,650 | | 5 | | 9 | | 11 | | | 24 | | 26 | |
| Cloud+ | CLOP | 3 | £1,350 | 23 | | | 4 | | 4 | | | 3 | | | 3 |
| Cyber Security Analyst+ (CSA+) | CSAP | 5 | £1,650 | 22 | | | 23 | | 18 | | | | | 26 | |

Linux & UNIX

| | Code | Days | Price | JAN | FEB | MAR | APR | MAY | JUN | JUL | AUG | SEP | OCT | NOV | DEC |
|---|--------|------|--------|-----|-----|-----|-----|-----|-----|-----|-----|-----|-----|-----|-----|
| UNIX & Linux Essentials | UNIXE | 3 | £1,100 | 3 | 5 | 5 | 9 | 8 | 4 | 30 | | 3 | 8 | 5 | 3 |
| Shell Scripting (BASH, Korn & Bourne) | SHELL | 3 | £1,100 | 8 | 12 | 12 | 17 | 14 | 11 | | 6 | 10 | 15 | 12 | |
| Linux System Administration (Red Hat/SUSE & Debian) | LNXA | 5 | £1,600 | | 19 | | 23 | | 18 | | | | 22 | | |
| IBM AIX System Administration Part 1 | AIXSA1 | 3 | £1,500 | 15 | | 19 | | 14 | | 16 | | 17 | | 5 | |
| IBM AIX System Administration Part 2 | AIXSA2 | 2 | £850 | 18 | | | | 17 | | 19 | | 20 | | 8 | |
| Oracle Solaris System Administration | SOLSA | 4 | £1,400 | | 19 | | 17 | | 18 | | 13 | | | | |
| HP-UX System Administration | HPSA1 | 3 | £1,300 | | | 26 | | 23 | | | 20 | | | | |

Microsoft Windows Platform

| | Code | Days | Price | JAN | FEB | MAR | APR | MAY | JUN | JUL | AUG | SEP | OCT | NOV | DEC |
|--|--------|------|---------------|-----|-----|-----|-----|-----|-----|-----|-----|-----|-----|-----|-----|
| Windows Server 2016 Overview | WIN16I | 2 | £700 | 22 | | | 16 | | 11 | | 6 | | 1 | 26 | |
| Windows Server 2016 Administration & Configuration | WIN16A | 5 | £1,700 | 22 | | | 16 | | 11 | | 6 | | 1 | 26 | |
| Windows Server 2012 Administration & Configuration | WIN12A | 5 | £1,700 | 22 | | | 16 | | 11 | | 6 | | 1 | 26 | |
| Windows 10 Pro Configuration & Support | W10PS | 3 | £995 | | 5 | | 9 | | 18 | | 13 | | | 5 | |
| Exchange Server Administration | EXC | 5 | £1,700 | 15 | | 5 | | 14 | | | | 10 | | 12 | |
| Windows Server Active Directory | WACDI | 3 | £1,300 | 24 | | | 4 | | | 9 | | | 8 | | |
| Mastering Windows PowerShell | WPS2 | 3/5 | £1,300/£1,700 | 8 | 19 | | 30 | | 25 | | | 24 | | 12 | |
| Managing SharePoint Server | MWSS | 5 | £1,700 | | 5 | | 23 | | 4 | | | 17 | | | 3 |
| Microsoft IIS for Windows Server | IIS | 4 | £1,400 | | | 12 | | 14 | | | | 3 | | 5 | |

Apache Projects

| | Code | Days | Price | JAN | FEB | MAR | APR | MAY | JUN | JUL | AUG | SEP | OCT | NOV | DEC |
|--------------------------------|-------|------|-------|-----|-----|-----|-----|-----|-----|-----|-----|-----|-----|-----|-----|
| Apache Webserver (Win & Linux) | APACH | 2 | £700 | 8 | | | 3 | | | 2 | | 17 | | 5 | |
| Apache Tomcat Administration | TOMA | 2 | £700 | 10 | | | 5 | | | 4 | | 19 | | 7 | |
| Apache Maven | MAV | 2 | £700 | | 5 | | 9 | | 18 | | 13 | | | 5 | |

Networking & Conferencing Technologies

| | Code | Days | Price | JAN | FEB | MAR | APR | MAY | JUN | JUL | AUG | SEP | OCT | NOV | DEC |
|---|------|------|--------|-----|-----|-----|-----|-----|-----|-----|-----|-----|-----|-----|-----|
| Networking with TCP/IP | NTCP | 3 | £1,300 | 22 | | 26 | | | | 16 | | 17 | | 19 | |
| Introduction to Video Conferencing | IVC | 1 | £300 | | | | 3 | | | 23 | | 24 | | 26 | |
| Video Conferencing Installation & Fault Finding | VCIF | 2 | £600 | | | | 4 | | | 23 | | 24 | | 26 | |
| Designing & Implementing Voice & Video over IP Networks | VOIP | 2 | £600 | | 1 | | 4 | | | 25 | | 26 | | 28 | |

Our business partners



www.verhoef-training.co.uk T. +44 (0)1225 339705 E. info@verhoef-training.co.uk